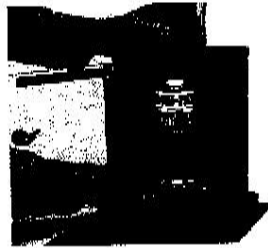


Production cont.

5. Insert cylinder (with can attached) into the top plate of unit. Push all the way back. Make sure the platform is locked in the proper height slot. Close the door.



6. Drop a check ball into the cylinder. If a check ball is not used, the paint will run out when you remove the can. USE FACTORY SUPPLIED CHECK BALLS ONLY.

Filling

Place the handle in the piston slot. Using the ring pin, align the holes and secure. You are now ready to fill the cans.

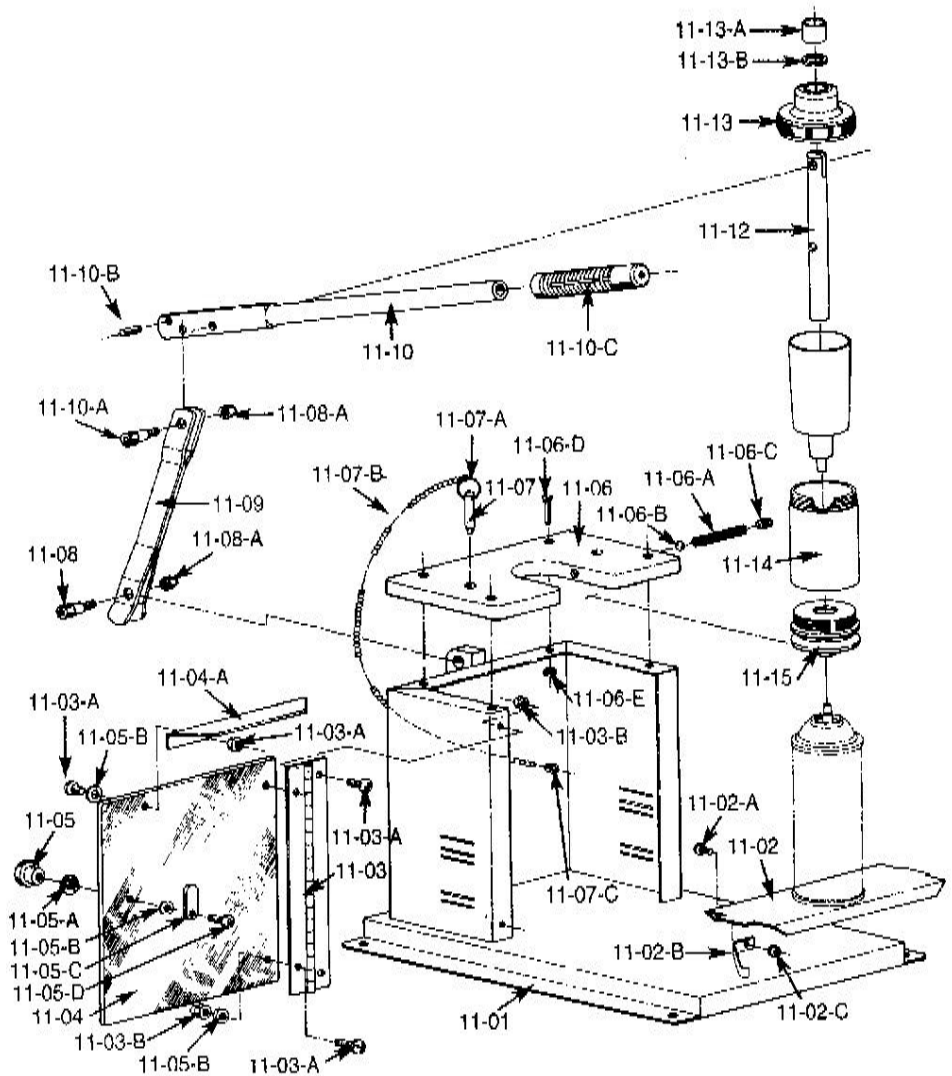
Pump the paint, using firm strokes. Start with the handle as high as it will go, continuing until the piston hits bottom. Pause between strokes - with the handle up - to allow the paint to drain into the narrow part of the cylinder.



REFER TO THE FILLING INSTRUCTIONS FOR SUGGESTED NUMBER OF STROKES.

PARTS DIAGRAM (Omni-Fill System)

- 11-01 Cabinet & Base
- 11-02 Can Platform
- 11-02A Screw Leaf
- 11-02B Spring Can Platform
- 11-02C Nut Retaining
- 11-03 Hinge
- 11-03A Screw
- 11-03B Nut
- 11-03C Washer Nylon
- 11-04 Door
- 11-04A Door Splash Shield
- 11-05 Knob
- 11-05A Spring Washer
- 11-05B Spacer Washer
- 11-05C Latch
- 11-05D Screw
- 11-06 Top Plate
- 11-06A Spring Coil
- 11-06B Ball
- 11-06C Screw Spring Retaining
- 11-06D Screw Top Plate
- 11-06E Nut Top Plate
- 11-07 Pin with Ring
- 11-07A Coupling
- 11-07B Ball Chain
- 11-07C Sleeve
- 11-08 Shoulder Screw
- 11-08A Lock Nut
- 11-09 Link Handle
- 11-10 Handle
- 11-10A Shoulder Screw
- 11-10B Roll Pin
- 11-10C Handle Grip
- 11-12 Piston
- 11-13 Top Cap
- 11-13A Bushing
- 11-13B Wiping Ring
- 11-14 Cylinder Barrel
- 11-15 Cylinder Bottom



Note: Some parts may be available only as part of a sub-assembly.

OMNI-FILL® OMNI-PAK®